

Eagle Pneumatic XL47 Drive-Thru System



Eagle Pneumatic's XL47 drive thru system is a reliable overhead vacuum-vacuum pneumatic tube system. This system provides a secure easy way to transfer cash, paperwork or prescriptions.

Vertical delivery of carrier makes customer handling an ease for all vehicles.

The Customer unit provides audio communication and the capability to add on 2-way video with the teller. An optional 10.4" LCD monitor allows for easier viewing for the drive up customer.

Standard features of the XL47 include: Stainless Steel construction with a powder coated top and front panel; camera mount in customer unit and easy low voltage hook up.

The use of slide gates along with a vacuum motor at each end gives the XL47 the ability to transport a heavy payload and eliminates the need for a sealed landing box.

The XL47 is ideal for new installation. The small footprint makes an excellent replacement unit.

Eagle Pneumatic, Inc.

The World's Most Versatile Pneumatic Tube Delivery Systems

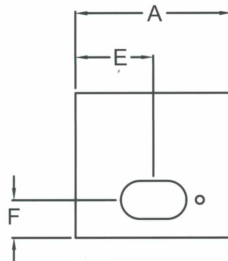


Eagle Pneumatic XL47 Drive-Thru System

Drive-Up Customer Stations

DIMENSIONS

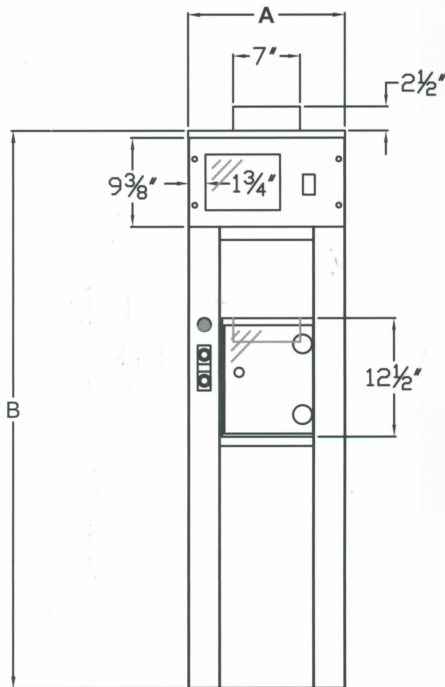
System Size	4" x 7"
A	16 $\frac{3}{8}$ "
B	53 $\frac{3}{4}$ "
C	2 $\frac{1}{2}$ "
D	15 $\frac{1}{4}$ "
E	8 $\frac{3}{16}$ "
F	4"
G	16 $\frac{1}{2}$ "



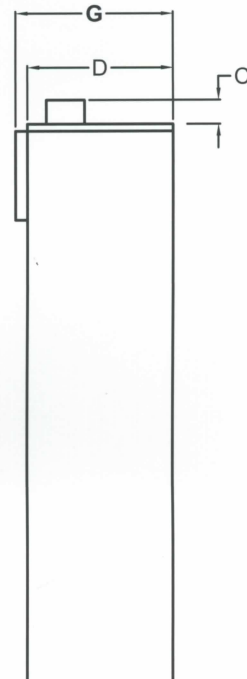
PLAN

ELECTRICAL REQUIREMENTS

Power: 115V, single-phase, 60 Hz



FRONT ELEVATION
XL47



SIDE VIEW



Eagle Pneumatic, Inc.
3902 Industry Boulevard
Lakeland, Florida 33811

Tel: 863.644.4870
Tel: 800.237.8261
Fax: 863.647.5328

E-mail: sales@eaglepneumatic.com
www.eaglepneumatic.com