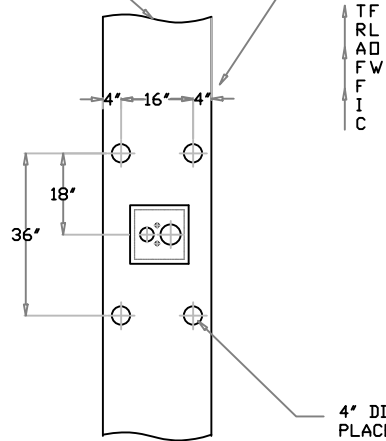


6" ISLAND

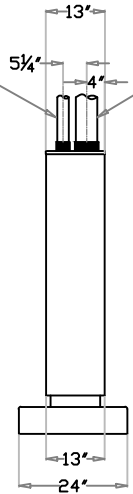
CUSTOMER SIDE



TF  
RL  
AD  
FW  
FI  
C

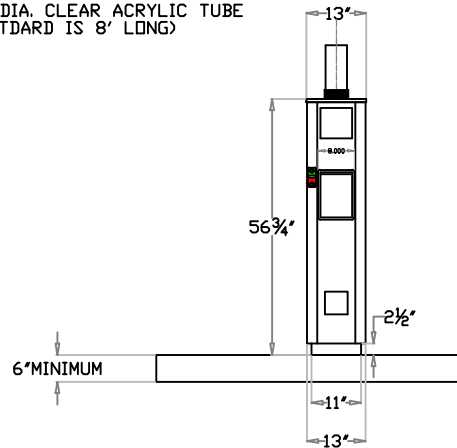
4" DIA. GUARD POST- 24" HIGH  
PLACE AS SHOWN  
TYPICAL EACH LANE  
(MATL & LABDR BY OTHERS)

2 1/4" CLEAR ACRYLIC TUBE  
STANDARD IS 8' LONG




LEFT SIDE ELEVATION

4 1/2" DIA. CLEAR ACRYLIC TUBE  
(STANDARD IS 8' LONG)



FRONT ELEVATION

J:\AUP\CAD\CAD 2016\S-SYSTEMS\S-12454 M2 ELITE CUSTOMER 4.5 INCH UP WITH VIDEO INSTALLATION DETAILS.dwg, 5/9/2016 2:41:05 PM

TOLERANCES $\pm 1/32$ " FRACTIONAL DIMENSIONS TOLERANCES $\pm .005$ " DECIMAL DIMENSIONS UNLESS OTHERWISE SPECIFIED	MATERIAL: ----- -----	
INFORMATION CONTAINED HEREIN IS PROPRIETARY TO EAGLE PNEUMATIC, INC. ALL RIGHTS RESERVED	FINISH: ----- -----	
TITLE: INSTALLATION SPECIFICATIONS FOR M2 ELITE 4.5" DRIVE UP SYSTEM WITH 2 WAY VIDEO	REV: /-- DRAWN: JAC DATE: --/--/-- CADFILE: --	DRAWING NO. S-12454 APPROVED: ISSUE 0