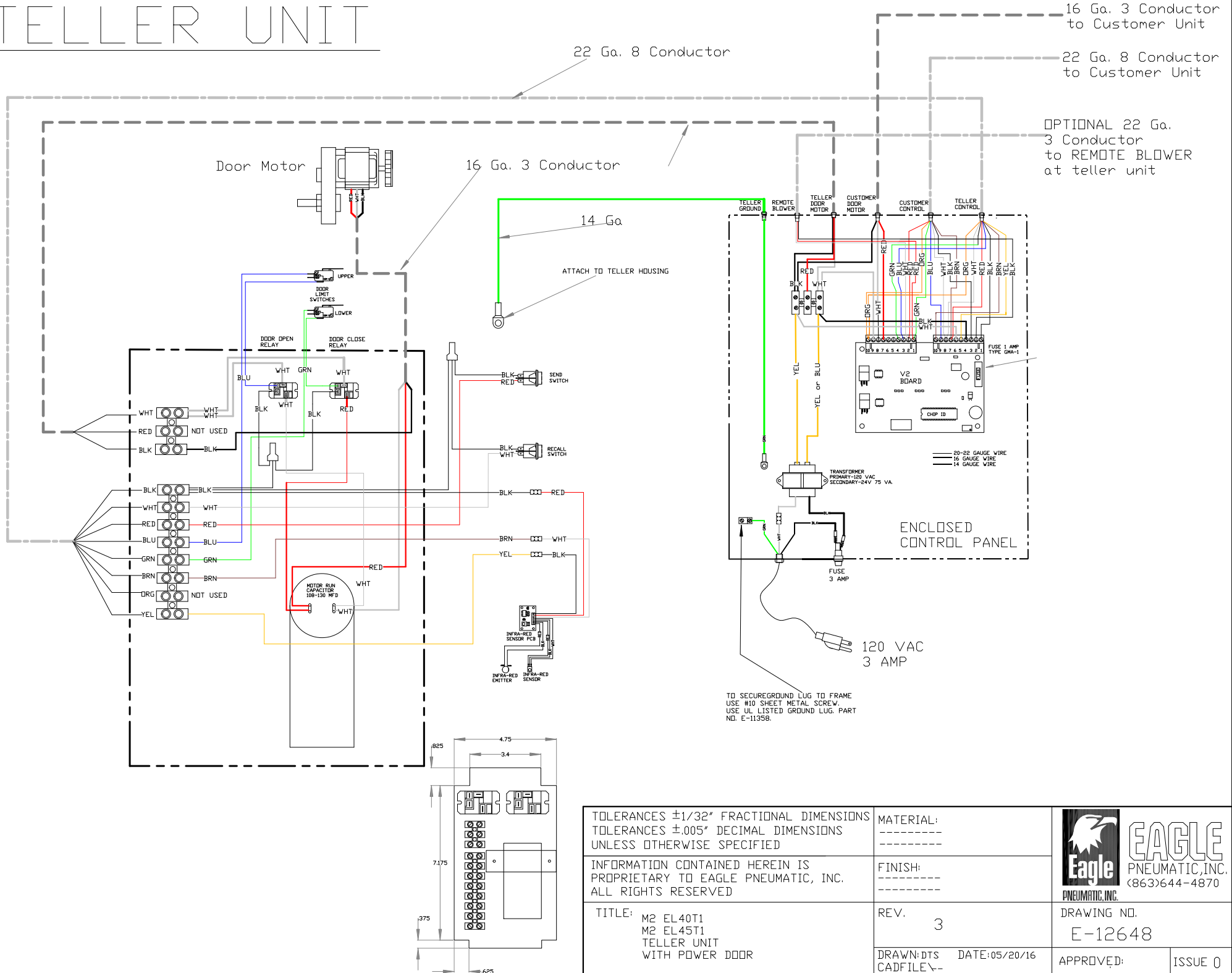


TELLER UNIT



TOLERANCES $\pm 1/32$ " FRACTIONAL DIMENSIONS
TOLERANCES $\pm .005$ " DECIMAL DIMENSIONS
UNLESS OTHERWISE SPECIFIED

INFORMATION CONTAINED HEREIN IS
PROPRIETARY TO EAGLE PNEUMATIC, INC.
ALL RIGHTS RESERVED

TITLE: M2 EL40T1
M2 EL45T1
TELLER UNIT
WITH POWER DOOR

MATERIAL: -----
FINISH: -----
REV. 3
DRAWN: DTS DATE: 05/20/16
CADFILE: \-



DRAWING NO. E-12648
APPROVED: ISSUE 0