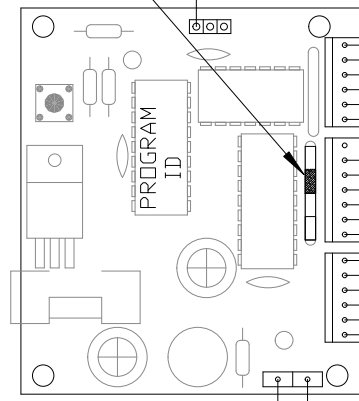
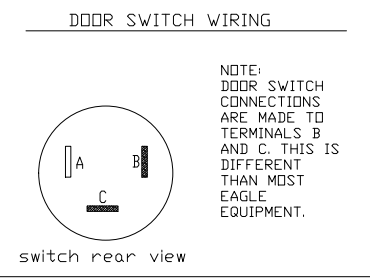


INSTALL JUMPER AT JP3 AS SHOWN. FAILURE TO INSTALL WILL CAUSE "IN USE" LEDS TO BE DIM.



CIRCUIT BOARD CONFIGURATION
 M2 PCB REQUIRES SOFTWARE RFINTE V1.00 OR LATER.
 SHORING BLOCK JP3 MUST BE INSTALLED ON PCB AS SHOWN.

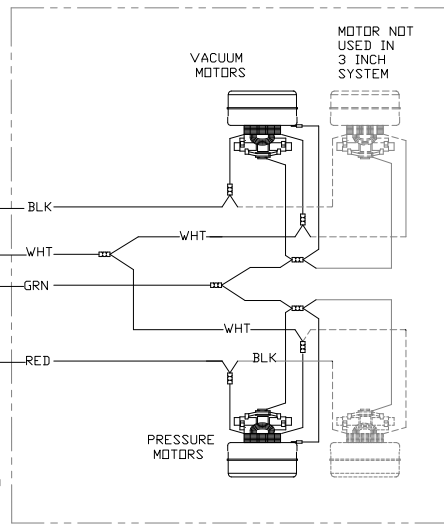
LED WIRING
 4.7K RESISTORS MUST BE INSTALLED AT EACH "IN USE" LED AS SHOWN FOR THE LED TO FUNCTION. FAILURE TO INSTALL A RESISTOR WILL DESTROY THAT LED.



CLASS 2 TRANSFORMER
 PRIMARY-120V.
 SECONDARY-24V 15VA

PRESSURE MOTOR RELAY

VACUUM MOTOR RELAY



120 VAC
 20 AMP BRANCH CIRCUIT PROTECTION TO BE PROVIDED BY OTHERS DURING FIELD INSTALLATION.

NOTE: PLUGS ARE NOT SUITABLE AS DISCONNECTS. USER MUST SUPPLY A SUITABLE DISCONNECT.

POWER CORD 14/3



INFORMATION CONTAINED HEREIN IS PROPRIETARY TO EAGLE PNEUMATIC, INC ALL RIGHTS RESERVED.

TOLERANCES:
 UNLESS OTHERWISE SPECIFIED
 FRACTIONS +/-1/32"
 DECIMALS +/-0.005"

REVISIONS:
 01 - 1/3/11

DRAWN BY: DTS/JAC

DATE: 12/27/10

NAME:
 WIRING DIAGRAM
 3 & 4 INCH
 MINI MARKII SYSTEM
 WITH SINGLE DOOR
 INTERMEDIATE
 STATION

PART NO.
 E-12617
 SHEET 1

CADFILE: