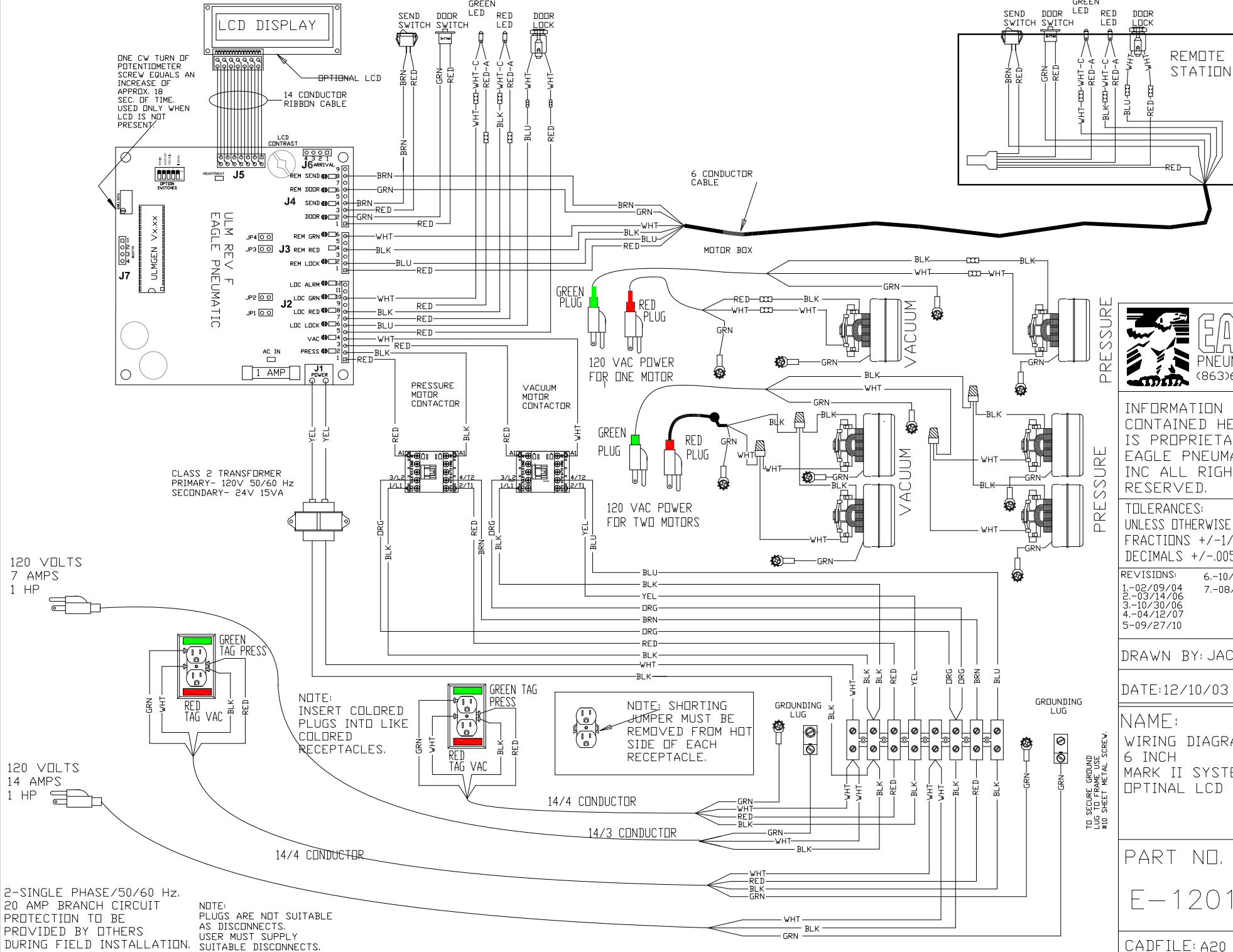


LOCAL STATION



INFORMATION CONTAINED HEREIN IS PROPRIETARY TO EAGLE PNEUMATIC, INC ALL RIGHTS RESERVED.

TOLERANCES: UNLESS OTHERWISE SPECIFIED FRACTIONS +/-1/32" DECIMALS +/-0.005"

REVISIONS:	6-10/17/13
1-02/09/04	7-08/01/16
2-03/14/06	
3-10/30/06	
4-04/12/07	
5-09/27/10	

DRAWN BY: JAC

DATE: 12/10/03

NAME:
WIRING DIAGRAM
6 INCH
MARK II SYSTEM I
OPTINAL LCD

PART NO.
E-12017WD

CAD FILE: A20

120 VOLTS
7 AMPS
1 HP

120 VOLTS
14 AMPS
1 HP

2-SINGLE PHASE/50/60 Hz.
20 AMP BRANCH CIRCUIT
PROTECTION TO BE
PROVIDED BY OTHERS
DURING FIELD INSTALLATION.

NOTE:
PLUGS ARE NOT SUITABLE
AS DISCONNECTS.
USER MUST SUPPLY
SUITABLE DISCONNECTS.

NOTE:
INSERT COLORED
PLUGS INTO LIKE
COLORED
RECEPTACLES.

NOTE: SHORTING
JUMPER MUST BE
REMOVED FROM HOT
SIDE OF EACH
RECEPTACLE.

TO SECURE GROUND
LUG TO FRAME USE
#10 SHEET METAL SCREW.