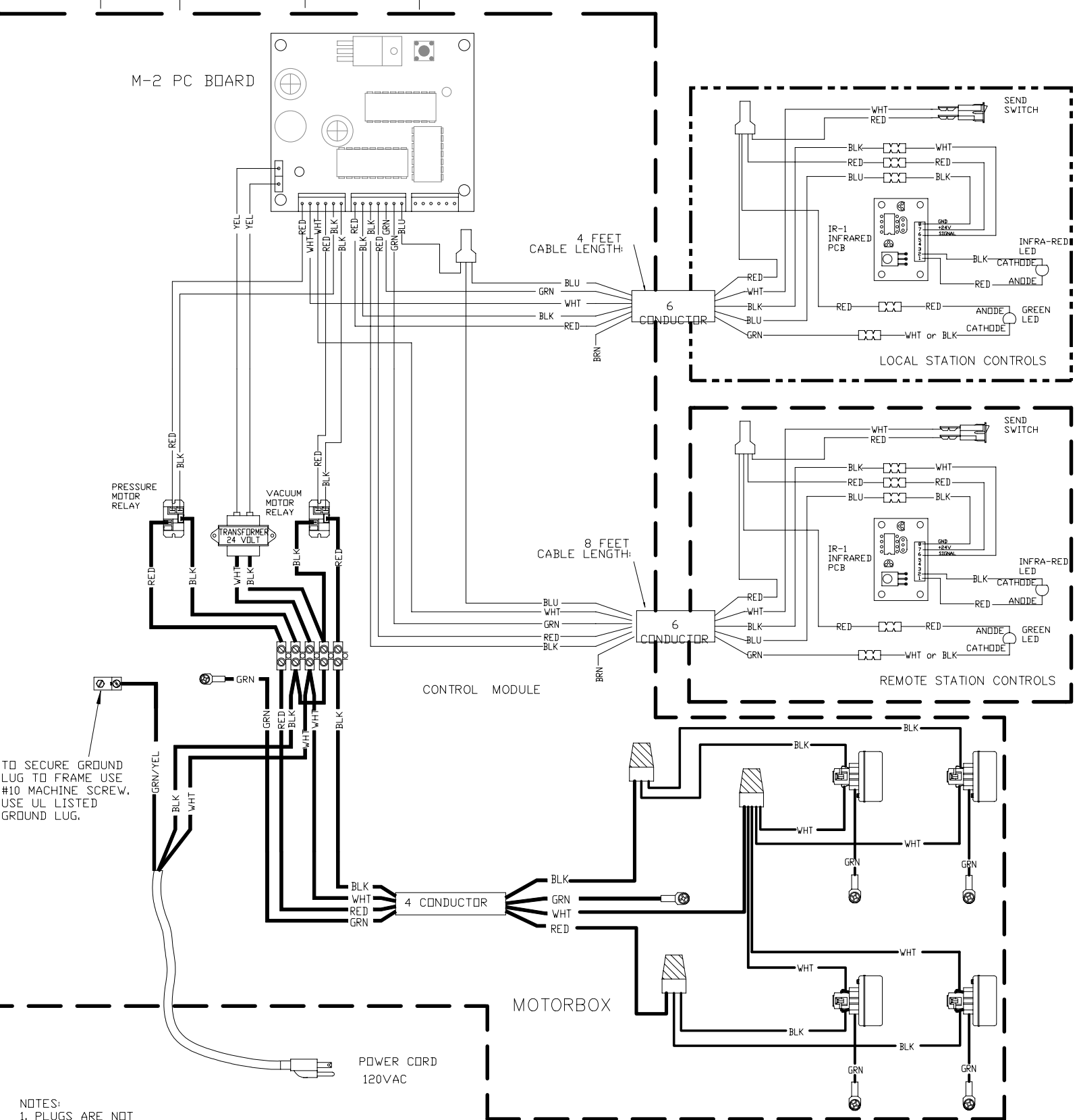


M-2 PC BOARD



TO SECURE GROUND LUG TO FRAME USE #10 MACHINE SCREW. USE UL LISTED GROUND LUG.


NOTES:
 1. PLUGS ARE NOT SUITABLE AS A DISCONNECT. OTHERS MUST SUPPLY A SUITABLE DISCONNECT. OTHERS MUST ALSO SUPPLY A 20 AMP. BRANCH CIRCUIT FOR EACH PLUG.

2. EACH POWER MUST BE SECURED WITH A SUITABLE STRAIN RELIEF WHEN EXITING CABINET.

VOLTAGE - 120 VAC

14 AMPS
 1 HP
 SINGLE PHASE/50/60 Hz
 20 AMP. BRANCH CIRCUIT PROTECTION TO BE PROVIDED BY OTHERS DURING FIELD INSTALLATION.

— 22 GAUGE WIRE
 — 16 GAUGE WIRE

TOLERANCES ±1/32" FRACTIONAL DIMENSIONS TOLERANCES ±.005" DECIMAL DIMENSIONS UNLESS OTHERWISE SPECIFIED	MATERIAL:	
INFORMATION CONTAINED HEREIN IS PROPRIETARY TO EAGLE PNEUMATIC, INC. ALL RIGHTS RESERVED	FINISH:	
TITLE: MINI MARK II - 4 INCH WITH POSITIVE REMOTE CARRIER ARRIVAL	REV. 01/26/16	DRAWING NO. E-12013P-4
	DRAWN BY: JAC DATE: 11/18/03 CAD FILE: A20	APPROVED:
		ISSUE 5