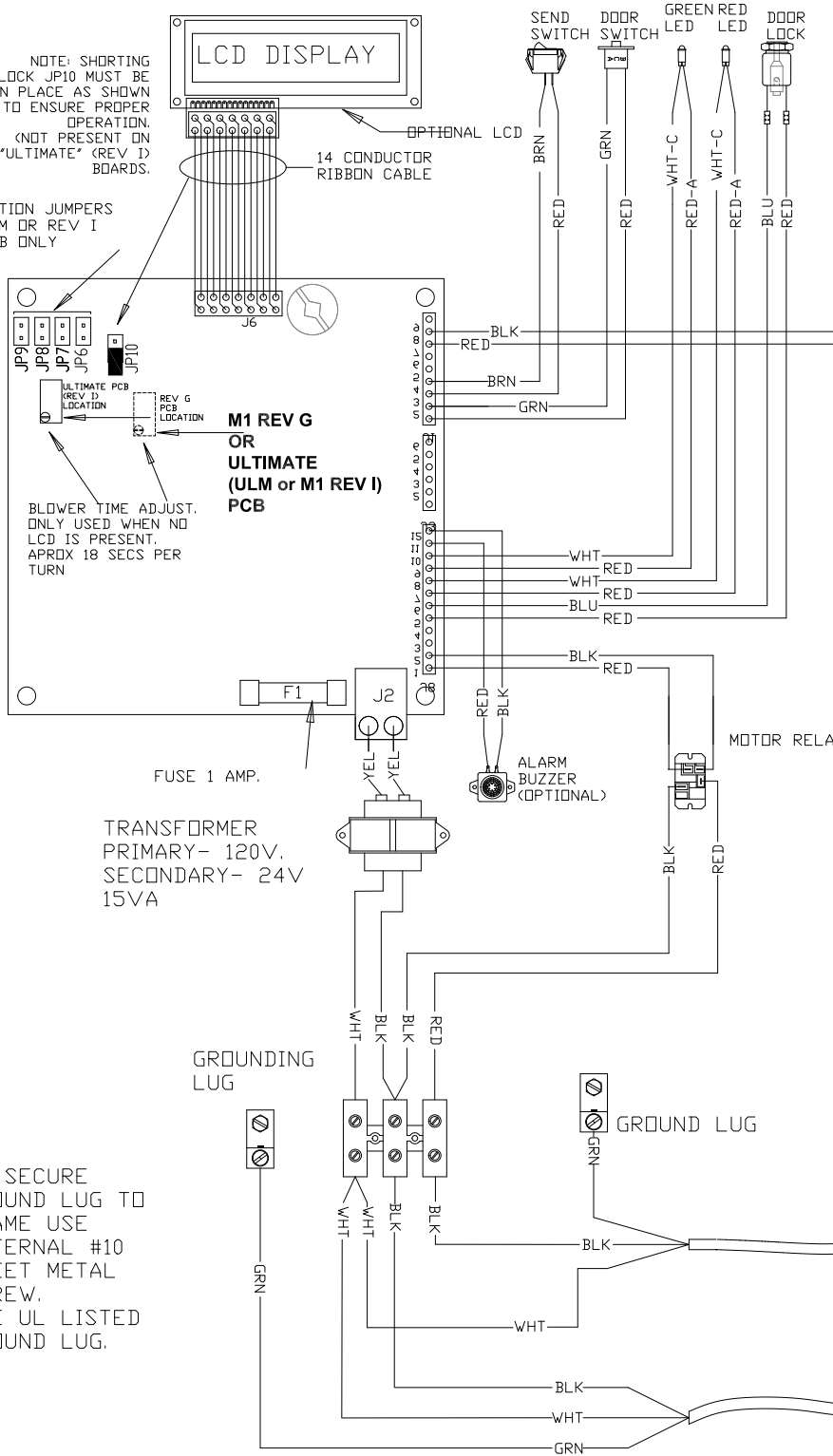


NOTE: SHORTING BLOCK JP10 MUST BE IN PLACE AS SHOWN TO ENSURE PROPER OPERATION. (NOT PRESENT ON "ULTIMATE" (REV I) BOARDS.)

OPTION JUMPERS ULM OR REV I PCB ONLY



BLOWER TIME ADJUST. ONLY USED WHEN NO LCD IS PRESENT. APPROX 18 SECS PER TURN

M1 REV G OR ULTIMATE (ULM or M1 REV I) PCB

FUSE 1 AMP.

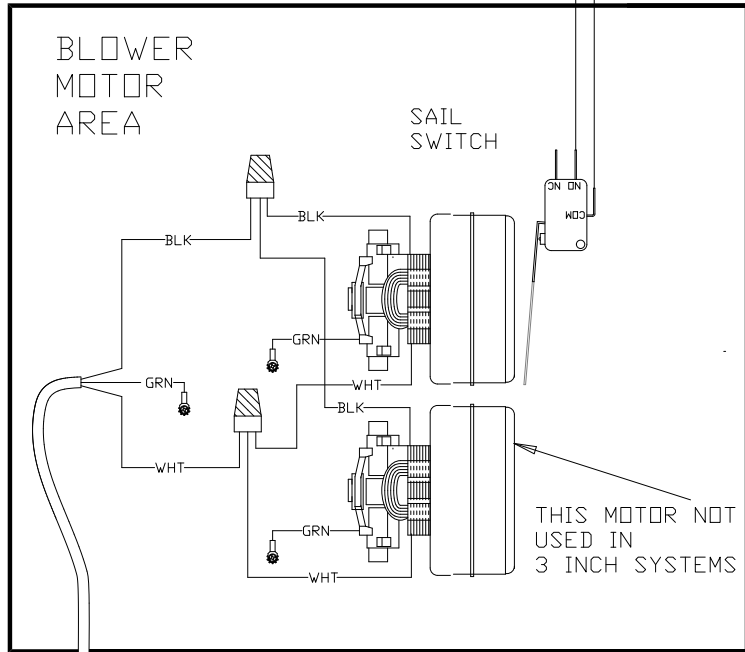
TRANSFORMER PRIMARY- 120V. SECONDARY- 24V 15VA

GROUNDING LUG

GROUND LUG

120 VAC POWER

TO SECURE GROUND LUG TO FRAME USE EXTERNAL #10 SHEET METAL SCREW. USE UL LISTED GROUND LUG.



VOLTAGE-120VAC
14 AMPS (7 AMPS FOR 3" SYSTEM)
1 HP
SINGLE PHASE/50/60 Hz.
20 AMP BRANCH CIRCUIT PROTECTION TO BE PROVIDED BY OTHERS DURING FIELD INSTALLATION.

NOTE:
PLUG IS NOT SUITABLE AS DISCONNECT. USER MUST SUPPLY SUITABLE DISCONNECT.



INFORMATION CONTAINED HEREIN IS PROPRIETARY TO EAGLE PNEUMATIC, INC ALL RIGHTS RESERVED.

TOLERANCES:
UNLESS OTHERWISE SPECIFIED FRACTIONS +/-1/32" DECIMALS +/-0.005"

REVISIONS:
1.-12/30/02
2.-04/10/03
3.-05/01/03
4.-07/03/03
5.-08/22/13
6.-07/07/14

DRAWN BY: JAC

DATE:12/30/02

NAME:
WIRING DIAGRAM
3 & 4 INCH
PRESSURE-PRESURE SYSTEMS WITH
OPTIONAL LCD DISPLAY FEATURE

PART NO.

E-11793

CADFILE: A20